

# d'Sozo

REVERSING THE WORST EVIL



# **An Assured Standing**

**CHOOSING A PATH OF INFLUENCE**



# **An Assured Standing**

**CHOOSING A PATH OF INFLUENCE**

# **A Whole New Approach**

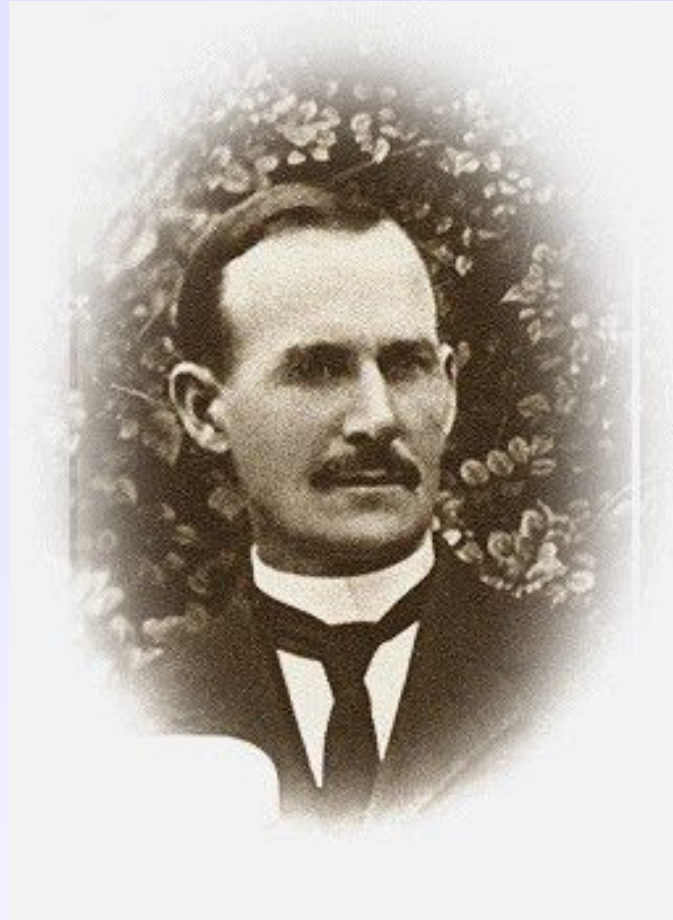
**“The cause of God today would have been far in advance of what it is, had we in former years been more active in the training of nurses who, in addition to their acquirement of more than ordinary skill in the care of the sick, had also learned to labor as evangelists in soul-winning service.**

# A Whole New Approach

**“It is for the training of such workers, as well as for the training of physicians, that the school at Loma Linda has been founded. In this school many workers are to be qualified with the ability of physicians, to labor, not in professional lines as physicians, but as medical missionary evangelists.... The cause is in need of hundreds of workers who have received a practical and thorough education in medical lines, and who are also prepared to labor from house to house as teachers, Bible workers, and colporteurs.”**

*—Counsels to Parents, Teachers, and Students, 471*

# John Burden



# **A Whole New Approach**

**“It will take some time to get a right understanding of the matter, but just as soon as we begin to work in the line of true reform, the Holy Spirit will lead us and guide us if we are willing to be guided.**

**“Much good can be done by those who do not hold diplomas as fully accredited physicians. Some are to be prepared to work as competent physicians. Many working under the direction of such ones can do acceptable work without spending so long a time in study as it has been thought necessary in the past.”**

*—Loma Linda Messages, 446.*

# **A Whole New Approach**

**“To us, it seems clear from the foregoing testimonies that there are at least three classes of workers to be educated in medical lines:**

**“First, Many well trained nurses to work as evangelists;**

**“Second, A large number of persons qualified with the ability of physicians to labor as evangelists**

**“Third, a few fully accredited physicians with recognition to stand at the head of the work.”**

*—Loma Linda Messages, 447*



# **A Whole New Approach**

**“Our people are now being tested as to whether they will obtain their wisdom from the greatest Teacher the world ever knew or seek to the god of Ekron. Let us determine that we shall not be tied by so much as a thread to the educational policies of those who do not discern the voice of God, and who will not hearken to His commandments....**

# **A Whole New Approach**

**“Shall we represent before the world, that our physicians must follow the pattern of the world, before they can be qualified to act as successful physicians? This is the question that is now testing the faith of some of our brethren. Let not any of our brethren displease the Lord, by advocating in their assemblies the idea that we need to obtain from unbelievers a higher education than that specified by the Lord.”**

*—Loma Linda Messages, 447*

# **California Medical Societies, 1900**

- ◆ **The American Medical Association**  
also referred to as “regular” medicine
- ◆ **The Osteopathic Medical Society**
- ◆ **The Homeopathic Medical Society**
- ◆ **The Chiropractic Medical Society**
- ◆ **The Eclectic Medical Society**

# **California Medical Licensing, 1901**

**February 27—**

- ◆ **New law placed all medical licensing under the jurisdiction of a single Board of Medical Examiners made up of five representatives of the AMA, two Homeopaths, and two Eclectics**

**March 9—**

- ◆ **Another new law established a Board of Osteopathic Examiners, and explicitly exempted them from the jurisdiction of any other provision of California law**

# **California Medical Licensing, 1907**

**After twenty-one congressional bills failed to re-write the law during the intervening years, a new statute was finally passed.**

**There were a number of minor changes, and two very significant new provisions—**

# **California Medical Licensing, 1907**

**“Three forms of certificate shall be issued by said board...: first, a certificate authorizing the holder thereof to practice medicine and surgery; second, a certificate authorizing the holder thereof to practice osteopathy; third, a certificate authorizing the holder thereof to practice any other system or mode of treating the sick or afflicted not referred to in this section.”**

# California Medical Licensing, 1907

The new law required examinations on “anatomy, histology, gynecology, pathology, bacteriology, chemistry and toxicology, physiology, obstetrics, general diagnosis, [and] hygiene.”

What's missing here? Two items specified by the previous law have been left off the “required” list.

- ◆ **Materia medica**
- ◆ **Surgery**

# **Elder Burden's Plan**

**Since “the Legislature of California has opened the way for the students of such a school as the Loma Linda College of [Medical] Evangelists to be legally recognized to practice sanitarium methods of healing, or rational remedies.... with no thought or effort on our part,... [it has] seemed to us a divine providence, coming as it did the next year after we had started our school.**



## **Elder Burden's Plan**

**“The battle was fought by the osteopaths, but the Legislature then threw the gate wide open for any school whose requirements for entrance to the medical course were equal to a high school preparation on the ten fundamental branches that underlie medical education. *Materia medica* and surgery are both thrown out, so that a good, thorough school of hygiene or rational practice of medicine would have no difficulty in being recognized in this state.**

# **Elder Burden's Plan**

**“And should our school be recognized here, its students would have a vantage ground from which to secure recognition in other states, the same as the osteopaths are being recognized.**

# **Elder Burden's Plan**

**“Their healing art is fast being recognized in all the states, but they have had to fight their way to the front with everything against them. Their opening the way will evidently make it easier, for a time at least, for other reputable methods of healing to become recognized.**

## **Elder Burden's Plan**

**“It certainly was a great misfortune that the American Medical Missionary College was launched under cover of the regular schools rather than under the banner of the healing art embodied in the third angel's message. And it seems to some of us that we shall make the same mistake they did if we undertake to follow their example in establishing a medical school whose very standard, if it is at all maintained, means commercialism from first to last....”**

## **Elder Burden's Plan**

**“I am sure that as soon as the question [of establishing an independent and uniquely *Adventist* medical college] comes up, the first thought will be of a superficial medical education that would be a disgrace to the work of the message, unless we can establish... a fully-equipped medical school after the world's idea, which could become a member of the Association of American Medical Colleges. I do not believe we should for a moment give countenance to anything of this sort.**

# **Elder Burden's Plan**

**“If much that is now embodied in the medical schools of the world is as useless as the maxims of the scribes and Pharisees, and if there are intricate studies that are a positive injury to the mind of the student, disqualifying him for the work he should do; and again, if much of their course is mere rubbish,...**

## **Elder Burden's Plan**

**“If much that is now embodied in the medical schools of the world is as useless as the maxims of the scribes and Pharisees, and if there are intricate studies that are a positive injury to the mind of the student, disqualifying him for the work he should do; and again, if much of their course is mere rubbish,... [see *Testimonies and Experiences Connected with the Loma Linda Sanitarium and College of Medical Evangelists*, 42]**

# **Elder Burden's Plan**

**“If much that is now embodied in the medical schools of the world is as useless as the maxims of the scribes and Pharisees, and if there are intricate studies that are a positive injury to the mind of the student, disqualifying him for the work he should do; and again, if much of their course is mere rubbish,... [or see EGW Letter B-241-'03, October 17, 1903]**



# **Elder Burden's Plan**

**If all the above is true, Elder Burden asked, “would a medical school eliminating these useless things from its work and adding that most helpful, healing agency—the influence of the gospel of Christ as revealed in the study of the Scriptures, combined with rational remedies and the ten fundamental branches taught in harmony therewith—would such a school become superficial simply because it stood alone and was not recognized by the modern schools of the world?”**

**—John Burden, Letter to W.A. Ruble, April 1908**

# Spread It Out!

**“Henceforth medical missionary work is to be carried forward with an earnestness with which it has never yet been carried. This work is the door through which the truth is to find entrance to the large cities.”**

*—Testimonies, vol. 9, 167*

# Spread It Out!

**“We must do more than we have done to reach the people of our cities. We are not to erect large buildings in these cities, but over and over again the light has been given that plants should be made in every city of America. We have no time to neglect the doing of this work, which for years has been outlined before us.”**

**—*Manuscript Releases*, vol. 4, 283**

# **Spread It Out!**

**“In every city there are men and women who would go to a sanitarium were it near at hand, who would not be able to go to one a long way off.... I look at this matter in a very decided light.”**

*—Loma Linda Messages, 53*

**“The Lord’s plan is to have small sanitariums established in many places, so that the greatest number of people, East and West, North and South, can be reached through this means.”**

*—Manuscript Releases, vol. 7, 211*

# Spread It Out!

**“The sick are to be reached, not by massive buildings, but by the establishment of many small sanitariums, which are to be as lights shining in a dark place.”**

*—Counsels on Health, 211*

**“Our sanitariums are to help to make up the number of God’s people. We are not to establish a few mammoth institutions; for thus it would be impossible to give the patients the messages that will bring health to the soul. Small sanitariums are to be established in many places.”**

*—Medical Ministry, 327*

## **Recognized as Preferable...**

**“The education that meets the world’s standard is to be less and less valued by those who are seeking for efficiency in carrying the medical missionary work in connection with the work of the third angel's message. They are to be educated from the standpoint of conscience, and, as they conscientiously and faithfully follow right methods in their treatment of the sick, these methods will come to be recognized as preferable to the methods to which many have become accustomed, which demand the use of poisonous drugs.”**

*—Testimonies, vol. 9, 175*

## **Recognized as Preferable...**

**“The education that meets the world’s standard is to be less and less valued by those who are seeking for efficiency in carrying the medical missionary work in connection with the work of the third angel's message. They are to be educated from the standpoint of conscience, and, as they conscientiously and faithfully follow right methods in their treatment of the sick, these methods will come to be recognized as preferable to the methods to which many have become accustomed, which demand the use of poisonous drugs.”**

*—Testimonies, vol. 9, 175*

## **Finances...**

**“You are to go into these cities and begin work in a humble way. If we had faithfully followed from the first the instruction regarding city work, means would have come in for us to establish in these places schools and small sanitariums where we could treat the sick, and preach the gospel, and educate the people in Bible truth.**



# Finances...

“You are to go into these cities and begin work in a humble way. If we had faithfully followed from the first the instruction regarding city work, means would have come in for us to establish in these places schools and small sanitariums where we could treat the sick, and preach the gospel, and educate the people in Bible truth. **We would have had means to sustain all the enterprises for missionary work that we could carry forward.**”

—*General Conference Bulletin*, June 4, 1909

# Finances...

**“Do you not know that unless you carry the truth to the cities, there will be a drying up of means?”**

**—*General Conference Bulletin*, May 24, 1909**

# **The Road We Traveled**

**“Does [the plan for the College of Medical Evangelists] contemplate the establishment of a full-fledged medical college that will be recognized... by legal bodies such as the American Medical Association? You know it must have such recognition to be worth a nickel.”**

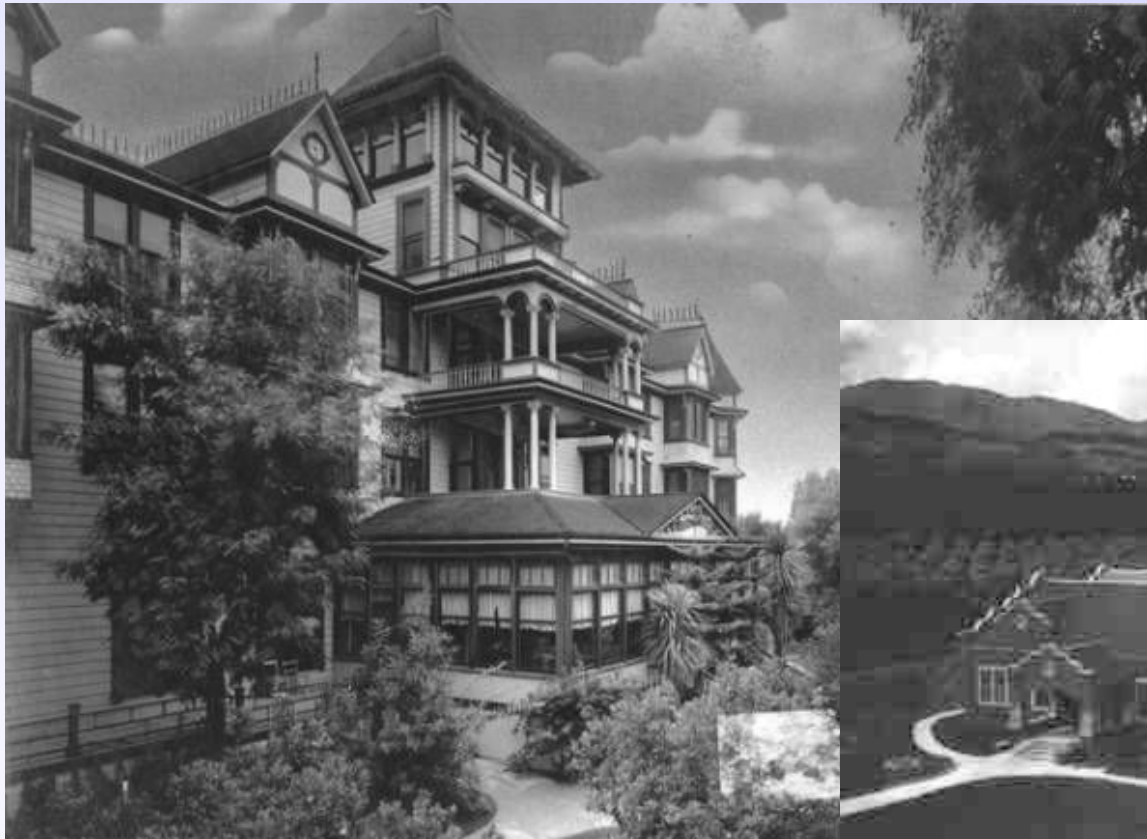
**—A.G. Daniells, General Conference President**

# **The Road We Traveled**

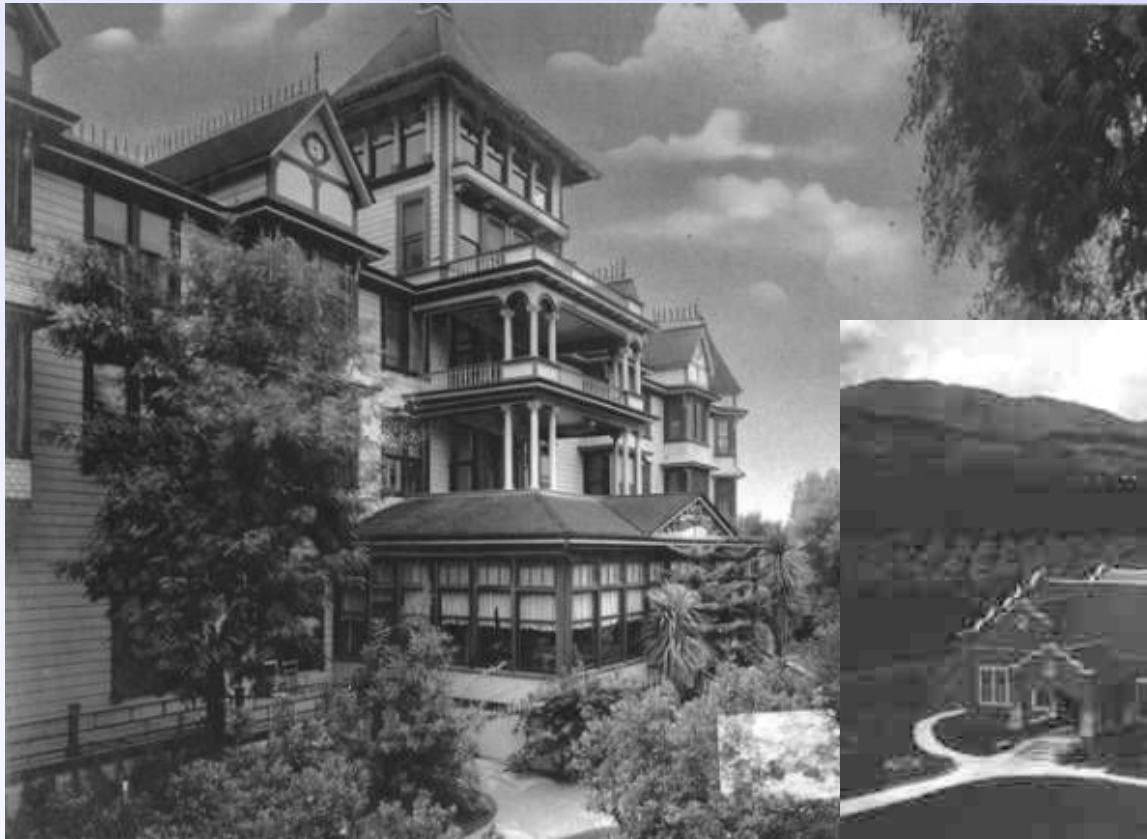
**“Does [the plan for the College of Medical Evangelists] contemplate the establishment of a full-fledged medical college that will be recognized... by legal bodies such as the American Medical Association? You know it must have such recognition to be worth a nickel.”**

**—A.G. Daniells, General Conference President**

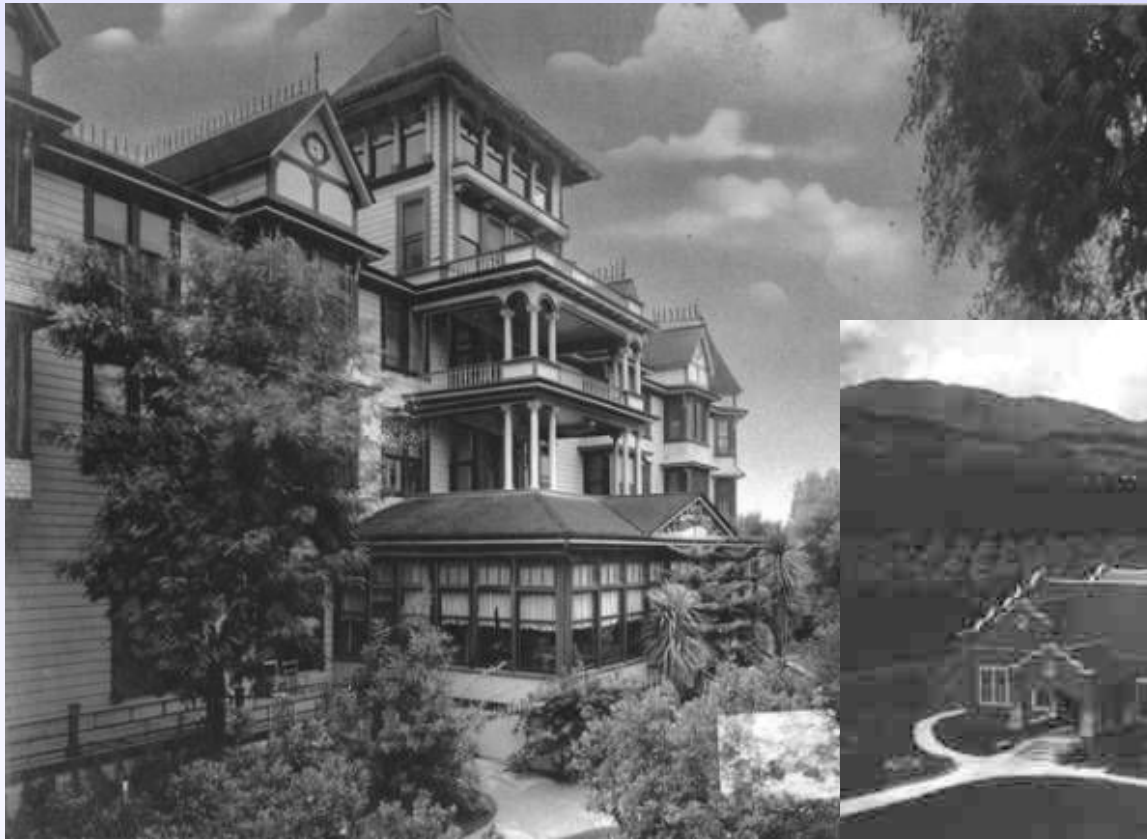
# The Road We Traveled



# The Road We Traveled



# The Road We Traveled



# The Road We Traveled

**“I was shown that the vision of buildings in Chicago and the draft upon the means of our people to erect them, and their destruction, was an object lesson for our people, warning them not to invest largely of their means in property in Chicago, or any other city, unless the providence of God should positively open the way and plainly point out duty to build or buy as necessary in giving the note of warning. A similar caution was given in regard to building in Los Angeles.”**

*—Paulson Collection, 50*



# **The Road We Traveled**

**“The Lord has at no time guided in the large plans that have been laid for buildings in Los Angeles. He has given light as to how we should move, and yet movements have been made that are contrary to the light and instruction given.**

**“I was... taken to see this property, and as I walked up the hill in front of it, I heard distinctly a voice that said,...**

# The Road We Traveled

**“Encourage no settlement here of any description. God forbids. My people must get away from such surroundings. This place is as Sodom for wickedness. The place where my institutions are established must be altogether different. Leave the cities, and like Enoch come from your retirement to warn the people of the cities.”**

*—Manuscript Releases, vol. 1, 250*

# The Road We Traveled

**“It was felt by some of the brethren that the Testimony of 1901 had reference to ‘a sanitarium’ and not to a clinical hospital such as the needs of the medical college now required.”**

**—*The Story of Our Health Message*, 398**

# The Road We Traveled

**“It was felt by some of the brethren that the Testimony of 1901 had reference to ‘a sanitarium’ and not to a clinical hospital such as the needs of the medical college now required.”**

**—*The Story of Our Health Message*, 398**

# The Road We Traveled

**“First they had to have the sanction of the State Board of Medical Examiners and they also wanted the approval of the American Medical Association.”**

**—*Los Angeles Times*, November 9, 1924**

# The Road We Traveled

**“Some of our medical missionaries have supposed that a medical training according to the plans of worldly schools is essential to their success. To those who have thought that the only way to success is by being taught by worldly men and by pursuing a course that is sanctioned by worldly men, I would now say, put away such ideas. This is a mistake that should be corrected. It is a dangerous thing to catch the spirit of the world; the popularity which such a course invites will bring into the work a spirit which the Word of God can not sanction.”**

*—The Medical Evangelist, April 1, 1910*



# d'Sozo

## REVERSING THE WORST EVIL

1

This file was originally prepared by Dave Fiedler, but you are welcome to use, share, or adapt it. Just don't make it heretical. Seriously—don't do that. If you happen to find additional information that somehow improves this presentation, please be so kind as to email a copy to me at [dfiedler@AdventistCityMissions.org](mailto:dfiedler@AdventistCityMissions.org).

My book on Adventist History, *Hindsight*, is also available through that address. (\$10 +s/h; free s/h on 5 or more copies). The book upon which this series of talks is based, (same title and subtitle as above) is currently available online from Remnant Publications. The HEALTH program (that's "Health Evangelism And Leadership Training for Him" and I highly recommend the class) operated by Weimar Institute has a supply, and the book is also available in at least some ABC's. If you are interested in box lots (36 copies per box), you could get in touch with me at the email above and I may (or may not) be able to help out on the pricing.

Questions and comments are always welcome, but please don't deprive yourself of sleep or food while waiting for a reply.

The notes for this file are typed out in some length so that readers can more or less re-create the full message of the presentation.

Sometimes there are notes intended to be read *before* the text on the slide, though usually the notes come *after* the text. How can you know? Just look for **CLICK** in the notes. If you see the bright red word, it means that the notes to that point apply *before* some element of the page which, in the original presentation format, would appear when the speaker "clicked" his remote control. It's not totally consistent, but if you're smart enough to be reading this, you're smart enough to figure it out. Any slide with no **CLICK** in it means that you read the slide first, then read the notes, and move on.



In our last meeting we looked at Ellen White's efforts in Australasia to establish a "model" work, including a model ministry that was closely connected to a broad medical missionary work focused on helping people in tangible, practical ways, including teaching them better ways of life.

This time, we're jumping ahead a bit to look at how all these ideas played out back in the States after her return to America in the fall of 1900.

To keep the historical context in mind, we need to remember some of the other things going on around our main story. Ellen White had barely gotten nicely settled in her home at Elmshaven when the General Conference session of 1901 called her to Battle Creek. The big issues there were the complete re-organization of the General Conference, trying to mend the deteriorating relationship between Dr. Kellogg and the ministry, moving Battle Creek College out of Battle Creek, and squashing out the "holy flesh" fanaticism that had cropped up the year before in Indiana.

Though none of those efforts was completely successful, it was the relationship between the medical work and the ministerial work that was the worst problem going forward. Then in 1902 the Sanitarium and the Review both burned to the ground. In between, Dr. Kellogg wrote *The Living Temple*, and pantheism became an issue—sort of.

When the General Conference and the Review and Herald were both moved to Takoma Park, and relations between Kellogg and the denomination continued to sour, it became more and more evident that Battle Creek was going down.

What would become of the medical work?

The Lord had another plan, this time out in California. In fact, it wasn't just a new location; in many ways what the Lord was calling for looked like a whole new approach. It wasn't, of course, but the fact that it looked that way may help us realize how far we had drifted from the ideal.

As might be expected, this "new approach" looked a lot like what Ellen White had been fostering in Australia.

## **A Whole New Approach**

**“The cause of God today would have been far in advance of what it is, had we in former years been more active in the training of nurses who, in addition to their acquirement of more than ordinary skill in the care of the sick, had also learned to labor as evangelists in soul-winning service.**

## A Whole New Approach

**“It is for the training of such workers, as well as for the training of physicians, that the school at Loma Linda has been founded. In this school many workers are to be qualified with the ability of physicians, to labor, not in professional lines as physicians, but as medical missionary evangelists.... The cause is in need of hundreds of workers who have received a practical and thorough education in medical lines, and who are also prepared to labor from house to house as teachers, Bible workers, and colporteurs.”**

*—Counsels to Parents, Teachers, and Students, 471*

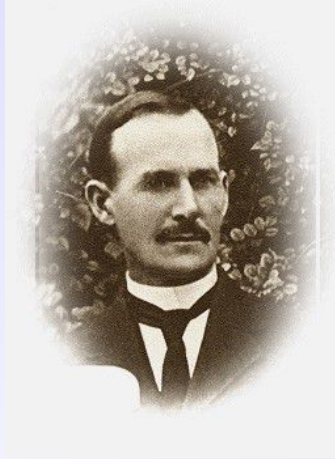
READ text...

Trying something new is tricky business.

Any administrator knows that doing something new often requires finding someone new.

Ellen White had just the man. Better yet, he was already on the job site. He just didn't know any of the details of what his job was going to be.

## John Burden



6

Bought Paradise Valley, then Glendale, but EGW said there was another one—Loma Linda

If you haven't heard the story of the purchase of Loma Linda, you need to read it for yourself—because I don't have time to tell you now.

The best thing about John Burden, though, is that in the eighty-three letters he received from Ellen White, he was never reproved.

What was his secret? He just did what the Lord told him to do.

But now he had a new job...

## **A Whole New Approach**

**“It will take some time to get a right understanding of the matter, but just as soon as we begin to work in the line of true reform, the Holy Spirit will lead us and guide us if we are willing to be guided.**

**“Much good can be done by those who do not hold diplomas as fully accredited physicians. Some are to be prepared to work as competent physicians. Many working under the direction of such ones can do acceptable work without spending so long a time in study as it has been thought necessary in the past.”**

*—Loma Linda Messages, 446.*

READ text, then

As Ellen White described it, the real goal included the creation of a whole new profession.

Something along the lines of an “Evangelistic Physician’s Assistant” or a “Bible Worker/Nurse Practitioner”

Here’s how John Burden summed it up in a letter to the General Conference Committee:

## **A Whole New Approach**

**“To us, it seems clear from the foregoing testimonies that there are at least three classes of workers to be educated in medical lines:**

**“First, Many well trained nurses to work as evangelists;**

**“Second, A large number of persons qualified with the ability of physicians to labor as evangelists**

**“Third, a few fully accredited physicians with recognition to stand at the head of the work.”**

*—Loma Linda Messages, 447*

READ text...

Any “new” idea will face challenges in breaking through the barrier of tradition.

No reason to think this case should be any different. But sometimes God calls us to step up higher than we’ve ever gone before.

Ellen White sensed the challenge, and took steps to provide support.

## **A Whole New Approach**

**"Our people are now being tested as to whether they will obtain their wisdom from the greatest Teacher the world ever knew or seek to the god of Ekron. Let us determine that we shall not be tied by so much as a thread to the educational policies of those who do not discern the voice of God, and who will not hearken to His commandments...."**

- 2 Kings 1:2 Now Ahaziah fell through the lattice of his upper room in Samaria, and was injured; so he sent messengers and said to them, "Go, inquire of Baal-Zebub, the god of Ekron, whether I shall recover from this injury."
- 2 Kings 1:3 But the angel {Or Angel} of the LORD said to Elijah the Tishbite, "Arise, go up to meet the messengers of the king of Samaria, and say to them, 'Is it because there is no God in Israel that you are going to inquire of Baal-Zebub, the god of Ekron?'"
- 2 Kings 1:6 So they said to him, "A man came up to meet us, and said to us, 'Go, return to the king who sent you, and say to him, "Thus says the LORD: 'Is it because there is no God in Israel that you are sending to inquire of Baal-Zebub, the god of Ekron? Therefore you shall not come down from the bed to which you have gone up, but you shall surely die.'"""



## **A Whole New Approach**

**“Shall we represent before the world, that our physicians must follow the pattern of the world, before they can be qualified to act as successful physicians? This is the question that is now testing the faith of some of our brethren. Let not any of our brethren displease the Lord, by advocating in their assemblies the idea that we need to obtain from unbelievers a higher education than that specified by the Lord.”**

*—Loma Linda Messages, 447*

READ text...

So... does the world offer a “higher” education in some respects? In some ways, maybe “yes”; but the real question is what education is “specified by the Lord” in order to do His work successfully?

OK, so now take a deep breath. Let all that sink in for a second before we plunge into our next section....

Ready? Here we go...

In order to make any sense of the next decade or so of Adventist history, we have to understand Medical Licensing in California at the time.

## **California Medical Societies, 1900**

- ◆ **The American Medical Association**  
also referred to as “regular” medicine
- ◆ **The Osteopathic Medical Society**
- ◆ **The Homeopathic Medical Society**
- ◆ **The Chiropractic Medical Society**
- ◆ **The Eclectic Medical Society**

**CLICK** for items

“regular” medicine, like “normal” teachers

The Eclectic Medical Institute (later, College), operated in Cincinnati, Ohio, from 1845–1942. This school of medical thought emphasized the use of herbal remedies, but was open to adopting any other techniques that proved advantageous.

## **California Medical Licensing, 1901**

**February 27—**

- ◆ **New law placed all medical licensing under the jurisdiction of a single Board of Medical Examiners made up of five representatives of the AMA, two Homeopaths, and two Eclectics**

**March 9—**

- ◆ **Another new law established a Board of Osteopathic Examiners, and explicitly exempted them from the jurisdiction of any other provision of California law**

**CLICK** for first item, and **READ**

Ten days later...

**CLICK** for second item

The osteopaths wanted nothing to do with a combined board of medical licensing. And everyone else became jealous. Toss in a few scandals connected to the licensing board, and some sort of change was bound to come.

## **California Medical Licensing, 1907**

**After twenty-one congressional bills failed to re-write the law during the intervening years, a new statute was finally passed.**

**There were a number of minor changes, and two very significant new provisions—**

## **California Medical Licensing, 1907**

**“Three forms of certificate shall be issued by said board...: first, a certificate authorizing the holder thereof to practice medicine and surgery; second, a certificate authorizing the holder thereof to practice osteopathy; third, a certificate authorizing the holder thereof to practice any other system or mode of treating the sick or afflicted not referred to in this section.”**

This is what the law said.

## California Medical Licensing, 1907

The new law required examinations on “anatomy, histology, gynecology, pathology, bacteriology, chemistry and toxicology, physiology, obstetrics, general diagnosis, [and] hygiene.”

What's missing here? Two items specified by the previous law have been left off the “required” list.

- ◆ *Materia medica*
- ◆ *Surgery*

Read, then

**CLICK** for question

**CLICK** for — “*Materia medica*”: what we now call pharmacology, the science of drugs.

**CLICK** for — *Surgery*

What did all these changes in the law mean for Seventh-day Adventists?

John Burden thought he knew, so he wrote a letter...

## **Elder Burden's Plan**

**Since "the Legislature of California has opened the way for the students of such a school as the Loma Linda College of [Medical] Evangelists to be legally recognized to practice sanitarium methods of healing, or rational remedies.... with no thought or effort on our part,... [it has] seemed to us a divine providence, coming as it did the next year after we had started our school.**

## **Elder Burden's Plan**

**"The battle was fought by the osteopaths, but the Legislature then threw the gate wide open for any school whose requirements for entrance to the medical course were equal to a high school preparation on the ten fundamental branches that underlie medical education. Materia medica and surgery are both thrown out, so that a good, thorough school of hygiene or rational practice of medicine would have no difficulty in being recognized in this state.**



## **Elder Burden's Plan**

**"And should our school be recognized here, its students would have a vantage ground from which to secure recognition in other states, the same as the osteopaths are being recognized."**

## **Elder Burden's Plan**

**"Their healing art is fast being recognized in all the states, but they have had to fight their way to the front with everything against them. Their opening the way will evidently make it easier, for a time at least, for other reputable methods of healing to become recognized.**

## **Elder Burden's Plan**

**"It certainly was a great misfortune that the American Medical Missionary College was launched under cover of the regular schools rather than under the banner of the healing art embodied in the third angel's message. And it seems to some of us that we shall make the same mistake they did if we undertake to follow their example in establishing a medical school whose very standard, if it is at all maintained, means commercialism from first to last...."**

## Elder Burden's Plan

**"I am sure that as soon as the question [of establishing an independent and uniquely *Adventist* medical college] comes up, the first thought will be of a superficial medical education that would be a disgrace to the work of the message, unless we can establish... a fully-equipped medical school after the world's idea, which could become a member of the Association of American Medical Colleges. I do not believe we should for a moment give countenance to anything of this sort.**

## **Elder Burden's Plan**

**"If much that is now embodied in the medical schools of the world is as useless as the maxims of the scribes and Pharisees, and if there are intricate studies that are a positive injury to the mind of the student, disqualifying him for the work he should do; and again, if much of their course is mere rubbish,...**

Sounds like dear, sweet Brother Burden is getting a little critical here, doesn't it?

What right does he have to say all those... uh, uncharitable things?

**CLICK** for first reference

## Elder Burden's Plan

**"If much that is now embodied in the medical schools of the world is as useless as the maxims of the scribes and Pharisees, and if there are intricate studies that are a positive injury to the mind of the student, disqualifying him for the work he should do; and again, if much of their course is mere rubbish,... [see *Testimonies and Experiences Connected with the Loma Linda Sanitarium and College of Medical Evangelists*, 42]**

Well, his comments are almost an exact quote from a 48-page pamphlet of Ellen White's counsels about the work at Loma Linda.

And if you do a little more checking, you'll find that the original source of the passage he's quoting is...

**CLICK** for second reference

## **Elder Burden's Plan**

**"If much that is now embodied in the medical schools of the world is as useless as the maxims of the scribes and Pharisees, and if there are intricate studies that are a positive injury to the mind of the student, disqualifying him for the work he should do; and again, if much of their course is mere rubbish,... [or see EGW Letter B-241-'03, October 17, 1903]**

...a letter that Ellen White had written in 1903.

And you can see that it is identified as "Letter B-241." That's because the "B" stands for "Burden."

Notice that this was written two years before the purchase of the college property, while Burden was working in Australia!

But, on with Elder Burden's thoughts—

## Elder Burden's Plan

If all the above is true, Elder Burden asked, “would a medical school eliminating these useless things from its work and adding that most helpful, healing agency—the influence of the gospel of Christ as revealed in the study of the Scriptures, combined with rational remedies and the ten fundamental branches taught in harmony therewith—would such a school become superficial simply because it stood alone and was not recognized by the modern schools of the world?”

—John Burden, Letter to W.A. Ruble, April 1908

Found in *Loma Linda Messages*, 368–370

Quoted in *Hindsight*, 199–201

Burden was describing a new approach... but a new approach to what? In other words, what was the point of all this? What did he see as the final objective of this approach to medical education that he was talking about?



## **Spread It Out!**

**“Henceforth medical missionary work is to be carried forward with an earnestness with which it has never yet been carried. This work is the door through which the truth is to find entrance to the large cities.”**

*—Testimonies, vol. 9, 167*

The primary purpose of all this emphasis on medical missionary work was reaching the cities.

But it turned out there was another aspect of the plan that was important to understand. See if you can catch it...

## **Spread It Out!**

**“We must do more than we have done to reach the people of our cities. We are not to erect large buildings in these cities, but over and over again the light has been given that plants should be made in every city of America. We have no time to neglect the doing of this work, which for years has been outlined before us.”**

*—Manuscript Releases, vol. 4, 283*

## **Spread It Out!**

**“In every city there are men and women who would go to a sanitarium were it near at hand, who would not be able to go to one a long way off.... I look at this matter in a very decided light.”**

*—Loma Linda Messages, 53*

**“The Lord’s plan is to have small sanitariums established in many places, so that the greatest number of people, East and West, North and South, can be reached through this means.”**

*—Manuscript Releases, vol. 7, 211*

## Spread It Out!

**“The sick are to be reached, not by massive buildings, but by the establishment of many small sanitariums, which are to be as lights shining in a dark place.”**

*—Counsels on Health, 211*

**“Our sanitariums are to help to make up the number of God’s people. We are not to establish a few mammoth institutions; for thus it would be impossible to give the patients the messages that will bring health to the soul. Small sanitariums are to be established in many places.”**

*—Medical Ministry, 327*

A lot of people have puzzled over this emphasis on small sanitariums. Ellen White certainly seemed to stress the point.... But people still seem to doubt that there is a good reason for her insistence on this.

And I guess my basic question is, what sort of good reason do we want that goes beyond the impossibility of “giving patients the messages that will bring health to the soul”?

The importance of all this is that the health care system of the church was going to be very largely determined by the health education of the church. In other words, what the College of Medical Evangelists taught was going to pretty much determine the nature of our health work down the road. So, naturally, Ellen White wanted to make sure that that education be correct.

## Recognized as Preferable...

**“The education that meets the world’s standard is to be less and less valued by those who are seeking for efficiency in carrying the medical missionary work in connection with the work of the third angel’s message. They are to be educated from the standpoint of conscience, and, as they conscientiously and faithfully follow right methods in their treatment of the sick, these methods will come to be recognized as preferable to the methods to which many have become accustomed, which demand the use of poisonous drugs.”**

—*Testimonies*, vol. 9, 175

30

This question of the “ideal” program of medical education is big, complex, and frankly, pretty tricky.

I’m going to guess that there will always be a variety of opinions on just about every aspect of this. One obvious question from this last quotation is “what does she mean when she says ‘poisonous drugs’”?

That’s just one of many fascinating questions that I’m not going to try to answer today. (Smile!) What I’ll do instead is to suggest a good approach to working out tricky problems. Here it is: Start on the obvious stuff first. It’s OK! God is patient! He’ll give you a break on the things you don’t understand, but the things that are already clear? Something tells me that God would like us to get started on those things.

## Recognized as Preferable...

**“The education that meets the world’s standard is to be less and less valued by those who are seeking for efficiency in carrying the medical missionary work in connection with the work of the third angel’s message. They are to be educated from the standpoint of conscience, and, as they conscientiously and faithfully follow right methods in their treatment of the sick, these methods will come to be recognized as preferable to the methods to which many have become accustomed, which demand the use of poisonous drugs.”**

—*Testimonies*, vol. 9, 175

31

To my thinking, the unavoidable reality is that the world’s educational standard and system is going to be somewhat different from the standard and system God wants for His church. Closer in some areas, no doubt, and further off target in others, but they will always be different—until the whole world is converted, ... or until we let the world tell us how to run God’s educational system.

So the basic picture was small sanitariums scattered all over the place with a relatively small number of doctors providing supervision over a much larger number of workers trained as uniquely well-qualified nurses versed in superior methods of patient care and trained in appropriate evangelistic methods.

But is that kind of small-scale, widely scattered medical missionary work financially feasible?

## Finances...

**“You are to go into these cities and begin work in a humble way. If we had faithfully followed from the first the instruction regarding city work, means would have come in for us to establish in these places schools and small sanitariums where we could treat the sick, and preach the gospel, and educate the people in Bible truth.**

It's a classic "faith" issue. God says, "You just need to get started doing what I've asked you to do, the way I've asked you to do it, and I'll make sure you have what you need to get the job done."

And, just to be clear on this... what does "means" mean?

Yup, we're talking about money.

How much money? You ask...

## Finances...

**“You are to go into these cities and begin work in a humble way. If we had faithfully followed from the first the instruction regarding city work, means would have come in for us to establish in these places schools and small sanitariums where we could treat the sick, and preach the gospel, and educate the people in Bible truth. **We would have had means to sustain all the enterprises for missionary work that we could carry forward.**”**

—*General Conference Bulletin*, June 4, 1909

If I'm reading this correctly, Ellen White just said that medical missionary work in the cities is going to be the financial backbone of the loud cry.

Who did you think was going to pay to get God's work done?

But, as is commonly the case, there's an unfortunate flip side to this promise.



## **Finances...**

**“Do you not know that unless you carry the truth to the cities, there will be a drying up of means?”**

*—General Conference Bulletin, May 24, 1909*

So here's my summary on this point:

City work is to be the financial foundation of the loud cry, and to neglect God's plans in this line is to court financial disaster.

## The Road We Traveled

**“Does [the plan for the College of Medical Evangelists] contemplate the establishment of a full-fledged medical college that will be recognized... by legal bodies such as the American Medical Association? You know it must have such recognition to be worth a nickel.”**

—A.G. Daniells, General Conference President

35

So... what finally happened with the college? Well, there were a number of complicated issues, and a number of strongly held opinions. Here's one of the more influential opinions. (Loma Linda Messages, 305. October 28-31, 1907)

**CLICK** and READ slide, then

Personally, I wish Elder Daniells hadn't said this. But, remember, Kellogg had been a huge pain in his neck for the last several years. Kellogg had lied to him (and about him). And Kellogg had developed the Chicago City Mission into a huge, financial drain that sucked up way too much money and accomplished relatively little in terms of souls won.

Continue with notes on next page

Daniells was done with all of that! (Unfortunately, even the good part.) He just wanted a “respectable” medical work for the church, And in his mind, at that time, it must have looked like linking up with the AMA was the safest thing, the “normal” thing to do.

A.G. Daniells was human; he had his faults. But he was a better man than I am, so let’s keep a little humility here. Besides, I like to think that if he could look back (as we can) over the last century since he made this comment, he might want to revise it some.

In the end, despite many, many warnings from the Spirit of Prophecy about the dangers of worldly influence on our medical college, the majority of the brethren saw advantages in associating with the AMA. One exception, I might mention, was the college’s business manager—John Burden.

But joining the AMA team wasn’t easy. One major hurdle was the matter of a facility for the practical training of the medical students.

## The Road We Traveled



37

The AMA rejected the Sanitarium building (**CLICK**) as inadequate, so the brethren voted to construct a hospital building (**CLICK**) at Loma Linda.

After two years, the building was unfinished, behind schedule, over budget—and already rejected by the AMA because it was too far out in the country. It was, in fact, in a tourist area! Right where God said a soul-winning health institution should be. (Medical Practice and the Educational Program at Loma Linda, 161; Hindsight, 216)

But that didn't make sense from the AMA's perspective. (Why should they see things our way?) Los Angeles was the population base; that's where the sick people were. What the college needed, they said, was a 200-bed hospital in downtown L.A.

Now, there is a fascinating story that we need to squeeze in just here. We won't have time for all the details, but it turns out that this wasn't the first time the AMA had told Adventists that they needed a big hospital in a big city.

Back in 1899, the same people had said the same thing to the directors of the American Medical Missionary College. That was Dr. Kellogg's school, and the AMA told them that they needed a large hospital in downtown Chicago.

Why did they need a hospital in downtown Chicago?

Because it was required, not by State or Federal law, but in order for them to join the AMA-affiliated Association of American Medical Colleges.

And what good would that do?

The answer was that it would give their college "an assured standing and position among the medical institutions of this and other countries."

In other words, if they lined up with this human organization, they would gain influence and prestige.

The directors had picked out a property in Chicago to buy, had drawn up plans for the building, and had everything ready to move forward when Dr. Kellogg came home from a trip to Europe.

But when Kellogg came back, he cancelled the project. Why?

Because while he was in Europe he had received a letter from Ellen White, who was in Australia at the time. In this letter, Ellen White had reproved Kellogg for spending a lot of money on a big, expensive building down in Chicago. She actually saw this big building get destroyed in some sort of natural disaster, with buildings all around it falling to the ground.

But what Ellen White didn't realize when she wrote her letter to Kellogg, was that the building she had seen in vision hadn't been built yet.

Dr. Kellogg cancelled the project, and kept quiet on the plans that had been drawn up, but he didn't keep quiet on Ellen White's letter. For the last forty years of his life, his favorite complaint against Ellen White was "She reproved me for building a building that was never built!"

It was three years before Ellen White heard about the plan to build such a building. That finally helped clear things up a bit, but it didn't explain this one funny little comment about the vision of the building in Chicago. She said, and I quote:

## The Road We Traveled

**“I was shown that the vision of buildings in Chicago and the draft upon the means of our people to erect them, and their destruction, was an object lesson for our people, warning them not to invest largely of their means in property in Chicago, or any other city, unless the providence of God should positively open the way and plainly point out duty to build or buy as necessary in giving the note of warning. A similar caution was given in regard to building in Los Angeles.”**

*—Paulson Collection, 50*

Funny that she would mention Los Angeles. The vision of the Chicago building was given to her in 1899. Loma Linda wasn't purchased until 1905, and the AMA didn't start putting the pressure on for a hospital in Los Angeles until about 1912.

But the building in Chicago was to be an object lesson for Los Angeles.

Well, sad to say, it seems that this “object lesson for our people,” and the “caution... given in regard to building in Los Angeles,” were forgotten.

When the AMA started telling Loma Linda that they needed a hospital in L.A., there is no record that anyone ever brought up the vision of the Chicago building.

## The Road We Traveled

**“The Lord has at no time guided in the large plans that have been laid for buildings in Los Angeles. He has given light as to how we should move, and yet movements have been made that are contrary to the light and instruction given.**

**“I was... taken to see this property, and as I walked up the hill in front of it, I heard distinctly a voice that said,...**

What the brethren did remember was a different episode that had happened back in 1901. It seems there had been a proposal to buy some property on Hill Street—then on the outskirts of L.A.—and build a combination sanitarium and vegetarian restaurant.

Ellen White’s counsel had been sought, and she had eventually been taken to see the property.

She was not impressed.

**CLICK** for text:



## The Road We Traveled

**“Encourage no settlement here of any description. God forbids. My people must get away from such surroundings. This place is as Sodom for wickedness. The place where my institutions are established must be altogether different. Leave the cities, and like Enoch come from your retirement to warn the people of the cities.”**

*—Manuscript Releases, vol. 1, 250*

That seems pretty clear. Anyone who could misunderstand language like that has to be a total idiot. Right?

Well, you know, if there's one thing I've learned from studying Adventist history, it's the old idea of Hindsight being 20/20. What looks plain as day now, may have been far more confusing at the time.

It is entirely fitting that people like me should be as charitable as possible in their evaluations of the men and women who built the ladder I've been privileged to climb.

So, anyway... what did they make of all this?

## The Road We Traveled

**“It was felt by some of the brethren that the Testimony of 1901 had reference to ‘a sanitarium’ and not to a clinical hospital such as the needs of the medical college now required.”**

*—The Story of Our Health Message, 398*

READ text

It should be pointed out again that there was no State or Federal law which “required” the College of Medical Evangelists to have a clinical hospital in downtown Los Angeles. The only requirement for that came from the AMA.

Nevertheless, the final result of these consultations was a 200-bed hospital in downtown Los Angeles. Its construction was authorized in the fall of 1915. It was completed in 1916, and named the Ellen G. White Memorial Hospital, in honor of the Lord’s messenger who had died in June 1915.

Continue with notes on next page

Over the decades since, the “White” has played a large role in the training of thousands of fully licensed, highly trained and qualified, Seventh-day Adventist physicians, many of whom have served the Lord selflessly, for which we should all be grateful.

The Medical Missionary course at Loma Linda that was to train thousands... did not fare so well. 1923 was the last year it was offered.

Personally, I believe we missed a golden opportunity. I think Elder Burden was right. I believe the Lord gave us the chance to establish a new kind of Medical Missionary practice—with the blessing of the State of California at the same time.

It appears to me that our effort went, instead, to trying to conform to the requirements and even the goals of the AMA.

By 1924 the medical school had become well known, and the Los Angeles Times ran a human interest story on the school’s history. Whether due to intrepid reporting, or simple coincidence, their reporter may have captured the truth of the matter. This is what he wrote:

**CLICK** for text:

## **The Road We Traveled**

**“First they had to have the sanction of the State Board of Medical Examiners and they also wanted the approval of the American Medical Association.”**

*—Los Angeles Times, November 9, 1924*

I freely confess that I can be a bit too pessimistic at times, and this may be one of them. But I fear that somehow we didn't give enough thought to statements like this:

## The Road We Traveled

**“Some of our medical missionaries have supposed that a medical training according to the plans of worldly schools is essential to their success. To those who have thought that the only way to success is by being taught by worldly men and by pursuing a course that is sanctioned by worldly men, I would now say, put away such ideas. This is a mistake that should be corrected. It is a dangerous thing to catch the spirit of the world; the popularity which such a course invites will bring into the work a spirit which the Word of God can not sanction.”**

*—The Medical Evangelist, April 1, 1910*



This last page is intentionally blacked out to provide a  
“blank screen.”